

**MUTOH**  
MAKES IT POSSIBLE

ECO-SOLVENT PRINTER

*XpertJet*



1682SR

BUILT FOR

PROFESSIONALS

The "XpertJet 1682SR 1625" Eco-Solvent Printer from MUTOH has a staggered dual head design that provides ultra-fast print speeds. It's capable of producing smooth gradations while delivering high-quality printing even with reduced resolution thanks to the NEW 8-colour ink configuration (CMYK Lc Lm Lk Or). The newly designed platform is packed with features like automatic bi-directional alignments, a user-friendly touch panel, added LED lighting, and an upgraded media feed flange that allows operators to easily and quickly load media and exchange multiple rolls.

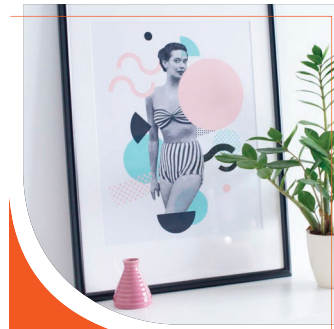
These features are designed to increase user-friendly operation and maintenance while continuing to offer high production and high-quality output. The "XPJ" 1682SR is paired with MUTOH's "MS41" Eco-Solvent ink, which offers users a larger colour gamut, outstanding durability, and improved dot gain.



WRAPS



SIGNAGE



POSTERS

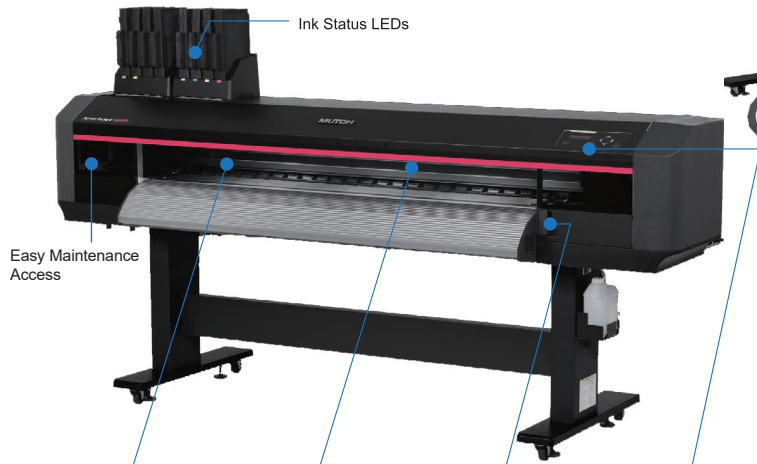


BANNER

# XpertJet 1682SR

EXPERTLY CRAFTED & USER-FRIENDLY

All New Platform Ensures Easy Maintenance, Usability and Quality



High Precision Aluminium Rail Mechanism



Internal LED lighting



Multi-stage pressurising mechanism



LED operation panel

NEW INK SET

UPGRADED TOUCH PANEL

NEW MEDIA HANDLING

AUTOMATIC ALIGNMENTS

INTERNAL LED LIGHTING

- High Precision Aluminium Rail Mechanism for high quality and stable printing.
- Improved "Media Feed Mechanism" corresponding to a wide range of media.
- New 8 Colour Eco-Solvent Ink provides high image quality and high productivity.
- The built-in colour sensor achieves "Automatic Bi-Directional Alignments".
- The Newly Developed Media Flange allows for easy media loading.
- MSM (MUTOH Status Monitor) improved convenience and response.
- Upgraded Operation Panel with LED guide function.
- Front Access of Ink Cartridge Holders, LAN cable and power codes.
- Internal LED Lighting enable operator to easily check print status.

XpertJet		XPJ-1682SR
Print head	Print method	On-demand piezo drive system
	Head Height	Three-level adjustment of Low 1.5mm, Mid. 2.5mm, and High 4.0mm
	Number	2 staggered
Media	Width	Maximum 1625mm / Minimum 500mm
	Max. thickness	Low: 0.3 mm Mid: 1.3 mm High: 2.8 mm
	Diameter	150mm or less
	Tube diameter	50mm or 75mm
	Weight	30 Kg
Maximum print width		1615mm
Maximum print length		1500 m
Ink	Type	Eco-Solvent ink
	Colour	2xCMYK / CMYK Lc Lm Lk / CMYK Lc Lm Lk Or
	Amount	1000ml ink bag
Print resolution		Max.1440dpi
interface		Gb-Ethernet (1000BASE-T)
Power supply	Printer	Voltage: AC 100V~120V ±10% / AC 200V~240V ±10% Frequency: 50/60Hz ±1Hz
	Heater	Voltage: AC 100V~120V ±10% / AC 200V~240V ±10% Frequency: 50/60Hz ±1Hz
Environment condition	Printer Operation	Temperature: 20°C~32°C Humidity: 40%~60% No condensation
	Accuracy Guaranteed	Temperature: 22°C~30°C Humidity: 40%~60% No condensation
Power consumption	Operation	AC100V-120V±10% / AC200V-240V±10%, 1100W or below
	Sleep Mode	AC100V-120V±10% / AC200V-240V±10%, 30W or below
External dimensions (W) x (D) x (H)		body: 2750mm x 895mm x 1428mm (cover closed), 1524mm (cover opened ) / (when installing ink bag cases: 1613mm)
Weight		Main body: 146 kg Stand 33 kg
RIP software		VerteLith